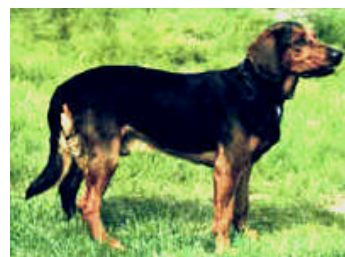


FCI Standard No. 68
Tyrolean Hound
Tiroler Bracke; Brachet Tyrolien;
Sabueso del Tirol



Classification:

Group: VI Scenthounds and Related Breeds
Section: 1. Scenthounds
Subsection: 2. Medium Sized Hounds
With working trial.

Origin: Austria

Info: Standard No 68 / 05.02.1996/ GB

TRANSLATION: C. Seidler.

DATE OF PUBLICATION OF THE VALID ORIGINAL STANDARD: 10.10.1995.

UTILIZATION: The Tyrolean Hound is the ideal working dog for the hunter in wood and mountains. It is used as scent hound for hunting on its own hare and fox while giving tongue as well as for tracking all kinds of wounded games.

Brief Historical Summary: The Tyrolean Hound (Tiroler Bracke) originates, as do all types of Bracke, from the Keltenbracke (Celtic Hound). With its dense doublecoat it represents the purest type of game hunting hounds.

Already around 1500 Emperor Maximilian I used first this noble Bracke in Tyrol for hunting and mentioned in his hunt diaries that he took his lead hounds (limiers) from them. In 1860, pure breeding from certain strains began in Tyrol and in 1896 a standard was drawn up which was officially recognized in 1908. From the many types of Bracke native to the Tyrol, only the red and the black and tan color varieties remain. In 1994, the "Tyrolian Niederbracke" was deleted.

General Appearance: Medium size. Bone of medium strength, strong, muscular, sinewy. Flowing, long outline. Robust and healthy. Shape long, rectangular, slightly longer than high.

Temperament/Behaviour: Steady, passionate hunting hound with fine scenting ability. Works independently and hunts with endurance, whereby giving tongue clearly and following scent firmly with a good sense of direction.

DESCRIPTION

HEAD:

CRANIAL REGION:

Skull: Broad, clean, lightly arched with clearly defined stop.

FACIAL REGION: Nose: Black leather. Slightly protruding.

Muzzle: Moderately deep, straight.

Lips: Short and close fitting.

Teeth: Strong complete scissor bite.

Eye: Large, not deep set. Lid aperture round. Iris dark brown, edge of third eyelid pigmented. Lids fitting taut against eyeballs.

Leathers: Broad, set on high, rounded at ends, reaching to top Canine when moderately extended.

NECK: Moderately arched, set on neither high nor low, dry without dewlap.

BODY: Long trunk.

Withers: Pronounced, forming highest point of back bone.

Back: Straight, taut and moderately broad.

Loin: Of medium depth.

Rump: Sloping moderately, not steep, broad and long.

Chest: Very deep, moderately broad. Well rounded forechest.

Belly: With slight tuck up.

TAIL: Set on high, long; reaching at least to hock joint. Carried high when excited. Saber shaped curve permitted, thick brush-like tail desired.

LIMBS: Shoulder laid back, well muscled. Upper arm well angulated. Legs straight. Joints in hindquarters well angulated.

Upper thigh: Broad and very muscled.

Feet: Strong with tightly closed, well arched toes and strong pads.

GAIT & MOVEMENT: Ground covering, very quick and enduring.

COAT: Thick double coat, undercoat coarse rather than fine. Hairy belly. Buttocks well feathered. Tail well coated with dense brush.

COLOR: Red or black and tan (may also be tricolor).

Red type: Red, deer red or red-fawn, too pale fawn is not desired.

Black and Tan type: Black main coat or saddle with red usually not clearly defined markings on legs, belly and head. Marking above eyes (Vieräugl) permitted.

White markings (Apply to both color types): Stripe on neck, patch on fore or back chest and feet and legs. Lack of white markings not to be counted as a fault.

SIZE: HEIGHT: 42 - 50 cm. **Dogs:** 44-50 cm. **Bitches:** 42-48 cm.

FAULTS: Any departure from the foregoing points should be considered a fault and the seriousness with which the fault should be regarded should be in exact proportion to its degree.

- Too weedy or too high on the leg. Too short on the leg.

- Absence of teeth.

- Too long, too soft in back.

- Coarse skull.

- Glass or wall eye.

- Pendant lips.

- Leathers too short, too long or folded.

- Shy temperament.

DISQUALIFYING FAULTS:

- Over or undershot bite.

- Absence of more than two molars.

- Distinctly pied coloring.

- Liver color, brown nose.

NOTE: Male animals should have two apparently normal testicles fully descended in the scrotum.